

1,000 SF & 2,500 SF SPACES FOR LEASE

DEMOGRAPHICS

Radius Ring	1 mile	3 miles	5 miles
Estimated Population	7,978	62,635	192,056
Avg. Household Income	\$76,560	\$105,810	\$111,969

Drive Time	5 min	10 min	15 min
Estimated Population	29,556	133,052	341,883
Avg. Household Income	\$96,339	\$102,488	\$107,088

- Great shopping center with a blend of local and national tenants
- Located at major signalized intersection
- Plenty of full access to both 99th St and Holmes
- One minute north of I-435



CLICK HERE TO VIEW MORE
LISTING INFORMATION

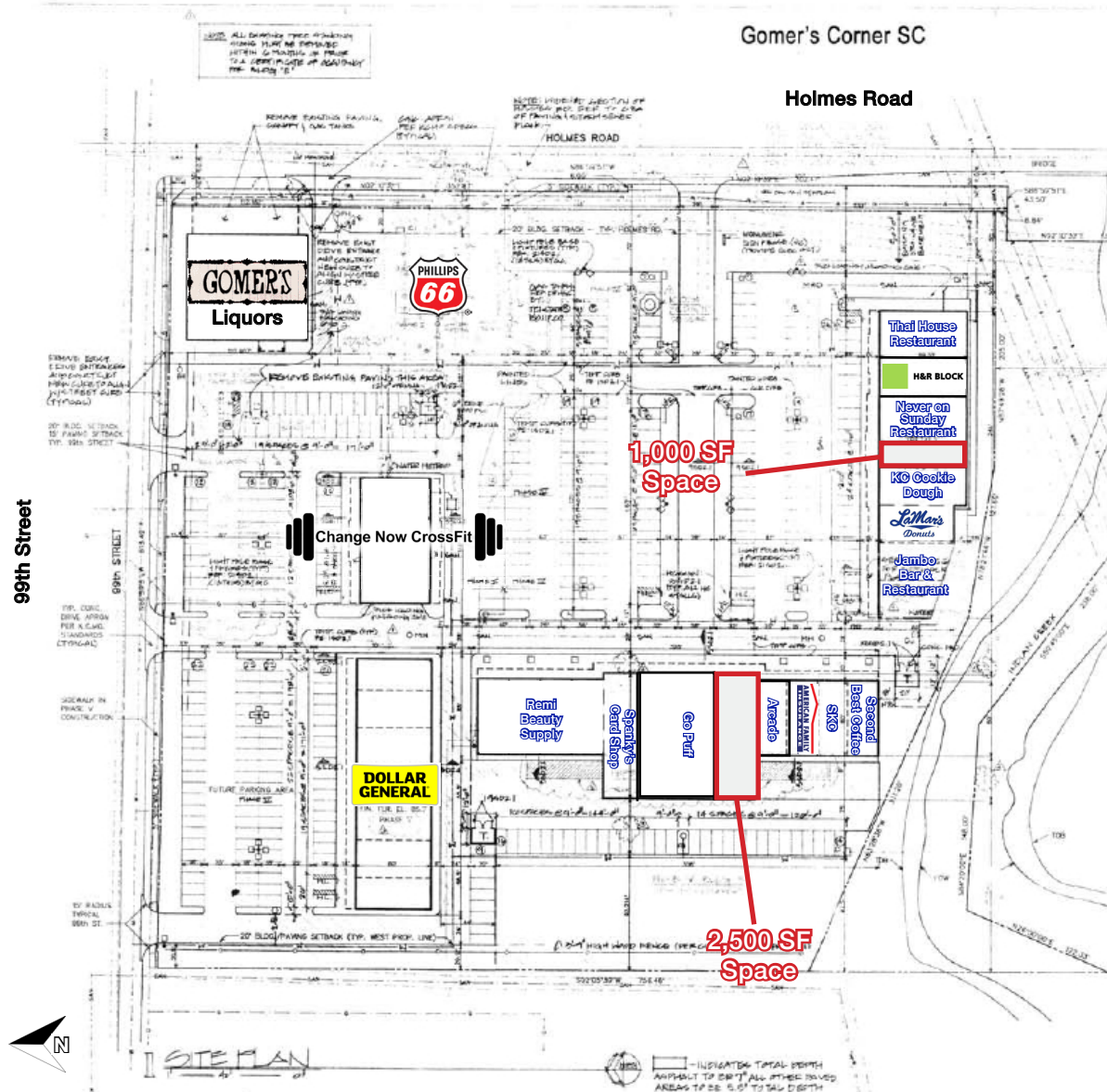
For More Information Contact:

TONY DETOMMASO | 816.412.7308 | tdetommaso@blockandco.com

MAX KOSOGLAD | 816.412.7363 | mkosoglad@blockandco.com

Exclusive Agents

SITE PLAN



TENANT LIST

Thai House Restaurant
 Never on Sunday Greek Restaurant
 Lamar's Donuts
 Jumbo Bar Restaurant
 Second Best Coffee
 Colorful Creations Spa & Salon
 GoPuff Grocery Delivery
 Spanky's Card & Game Shop
 Remi Beauty Supply
 CrossFit
 Gomer's Liquors
 American Family Insurance
 Phillips 66
 Dollar General
 and more...

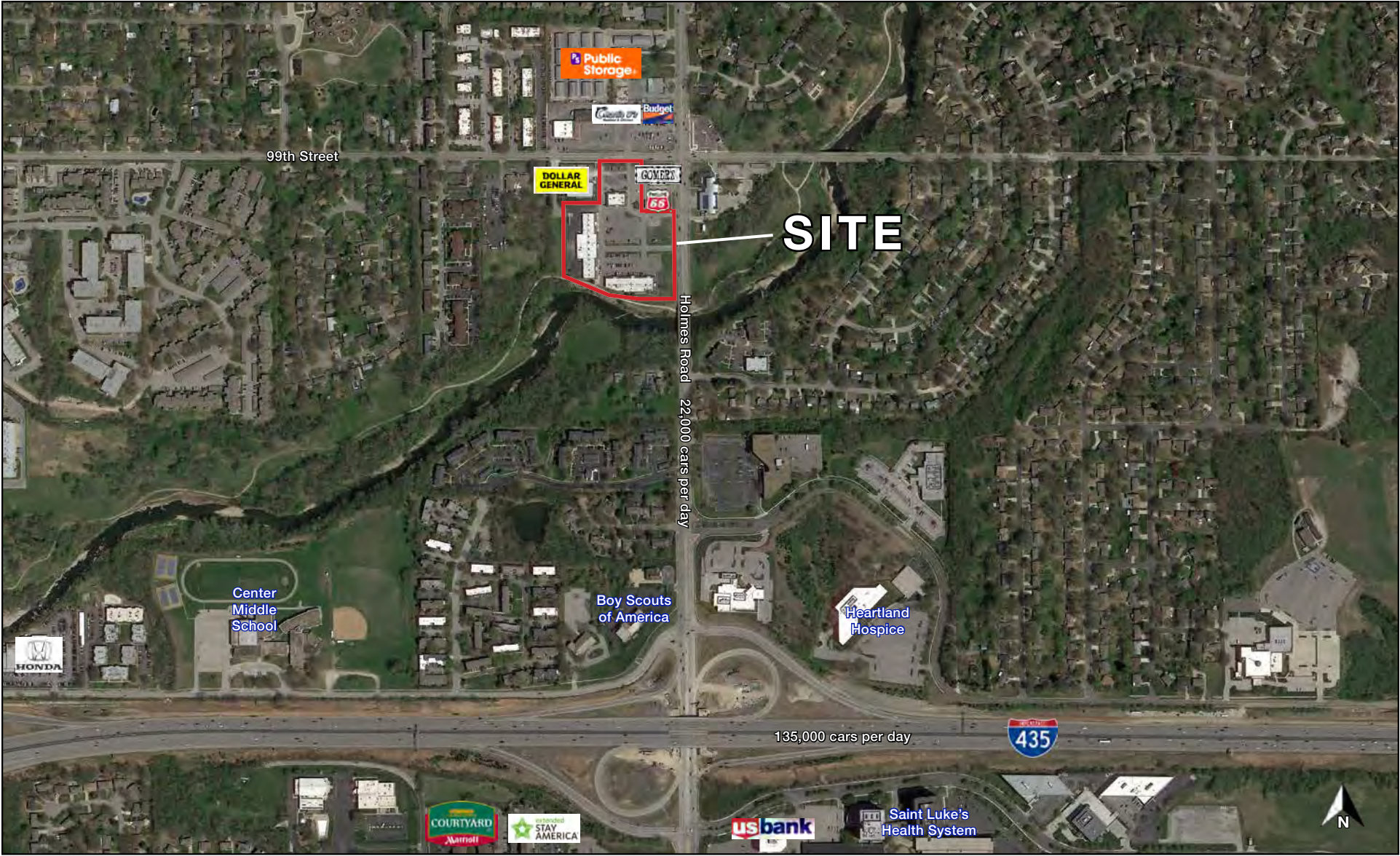


GOMER'S CORNERS SC SPACE

99th & Holmes Road (SWC), Kansas City, MO

FOR
LEASE

AERIAL

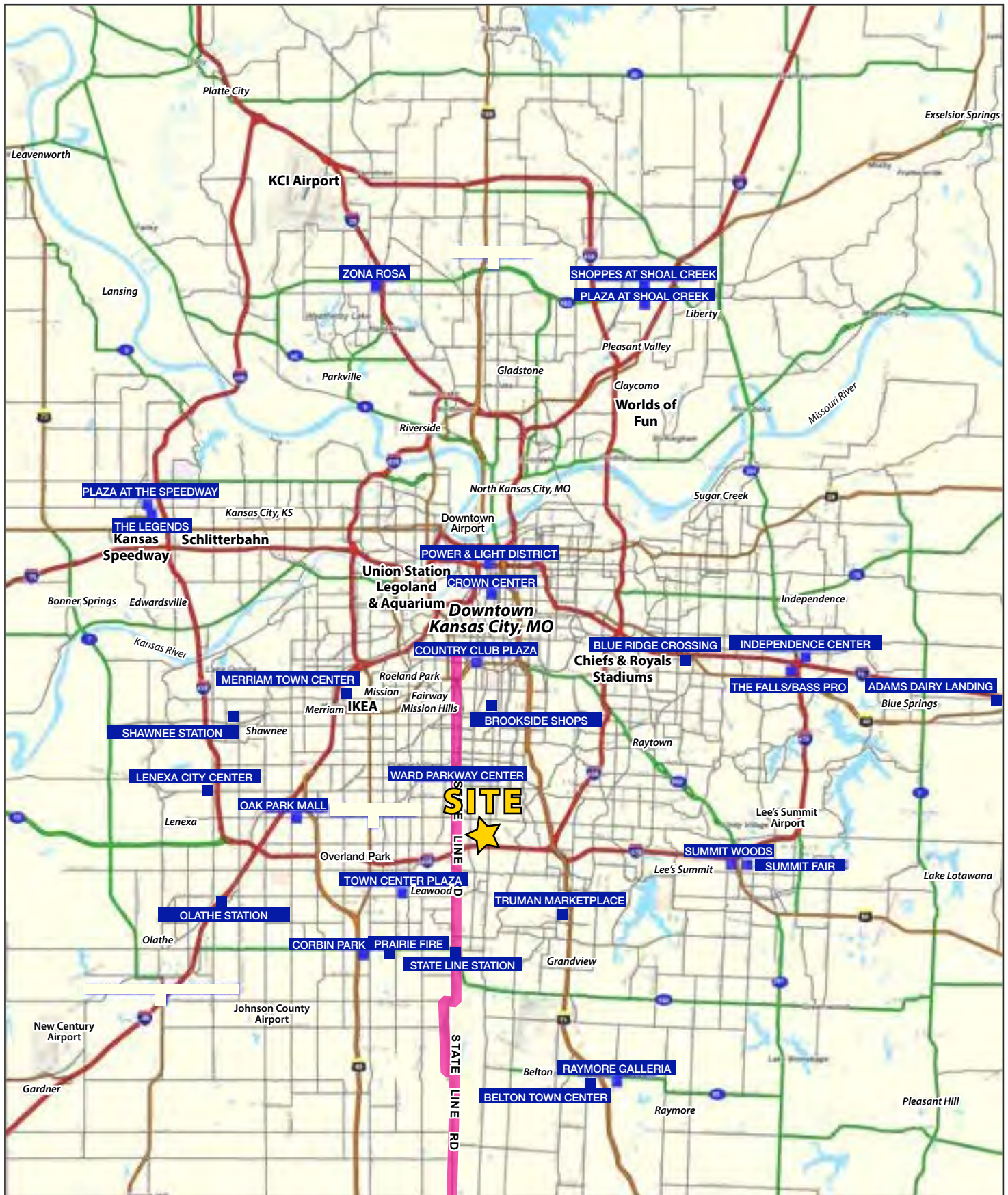




GOMER'S CORNERS SC SPACE

99th & Holmes Road (SWC), Kansas City, MO

FOR
LEASE



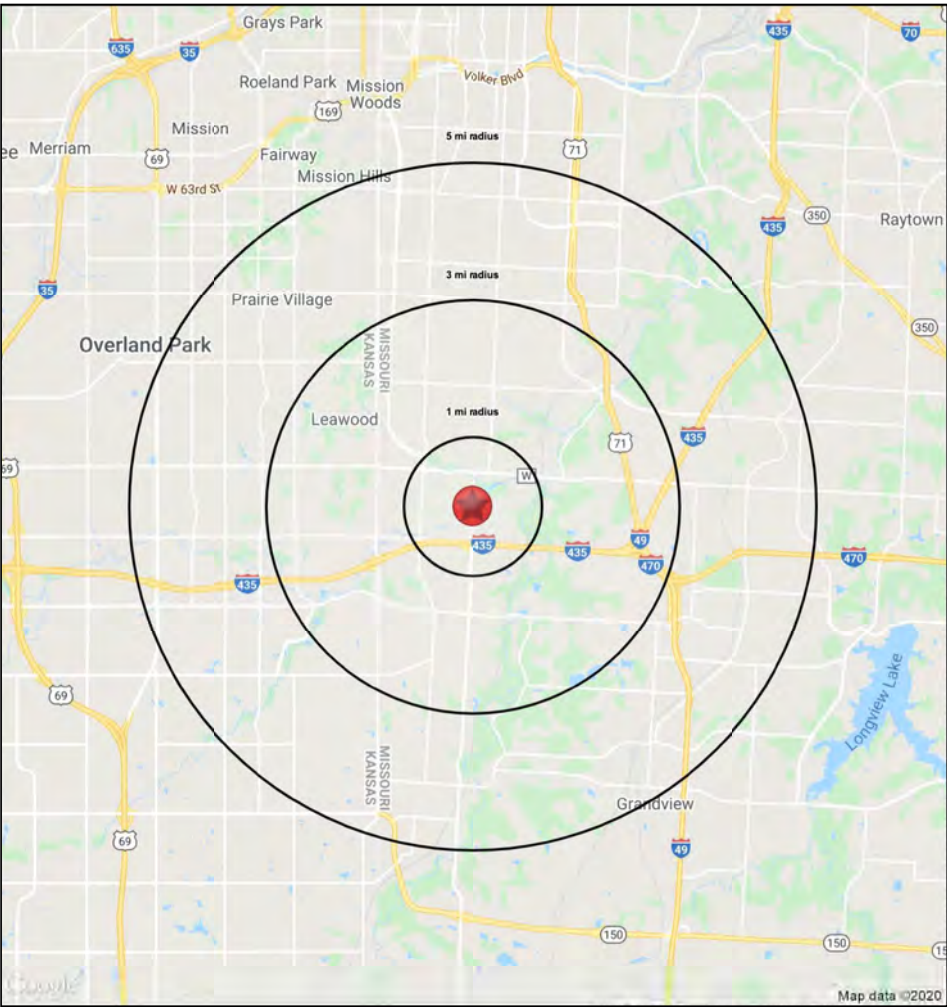


GOMER'S CORNERS SC SPACE

99th & Holmes Road (SWC), Kansas City, MO

FOR
LEASE

1-3-5 MILE RADIUS RING MAP & DEMOS



99th Street & Holmes Road Kansas City, Missouri	1 mi radius	3 mi radius	5 mi radius
Population			
2022 Estimated Population	7,978	62,635	192,056
2027 Projected Population	8,077	63,390	193,787
2020 Census Population	7,815	62,328	191,659
2010 Census Population	7,670	60,568	184,739
Projected Annual Growth 2022 to 2027	0.2%	0.2%	0.2%
Historical Annual Growth 2010 to 2022	0.3%	0.3%	0.3%
2022 Median Age	40.4	41.0	40.9
Households			
2022 Estimated Households	4,119	28,629	84,305
2027 Projected Households	4,153	28,988	85,337
2020 Census Households	4,023	28,464	84,078
2010 Census Households	3,900	27,296	80,114
Projected Annual Growth 2022 to 2027	0.2%	0.3%	0.2%
Historical Annual Growth 2010 to 2022	0.5%	0.4%	0.4%
Race and Ethnicity			
2022 Estimated White	51.8%	64.7%	64.5%
2022 Estimated Black or African American	33.1%	21.7%	22.3%
2022 Estimated Asian or Pacific Islander	2.2%	2.9%	2.7%
2022 Estimated American Indian or Native Alaskan	0.6%	0.5%	0.4%
2022 Estimated Other Races	12.3%	10.3%	10.1%
2022 Estimated Hispanic	9.1%	6.7%	7.0%
Income			
2022 Estimated Average Household Income	\$76,560	\$105,810	\$111,969
2022 Estimated Median Household Income	\$61,581	\$78,432	\$81,499
2022 Estimated Per Capita Income	\$39,573	\$48,465	\$49,270
Education (Age 25+)			
2022 Estimated Elementary (Grade Level 0 to 8)	0.5%	1.5%	1.5%
2022 Estimated Some High School (Grade Level 9 to 11)	3.7%	3.3%	3.6%
2022 Estimated High School Graduate	20.1%	18.1%	18.6%
2022 Estimated Some College	25.3%	21.9%	20.1%
2022 Estimated Associates Degree Only	7.4%	6.8%	6.2%
2022 Estimated Bachelors Degree Only	29.5%	30.3%	30.4%
2022 Estimated Graduate Degree	13.5%	18.2%	19.6%
Business			
2022 Estimated Total Businesses	261	2,550	9,119
2022 Estimated Total Employees	2,741	38,058	133,484
2022 Estimated Employee Population per Business	10.5	14.9	14.6
2022 Estimated Residential Population per Business	30.6	24.6	21.1



